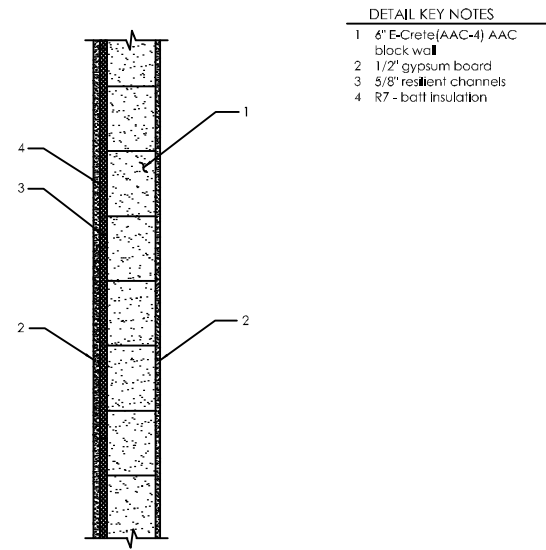


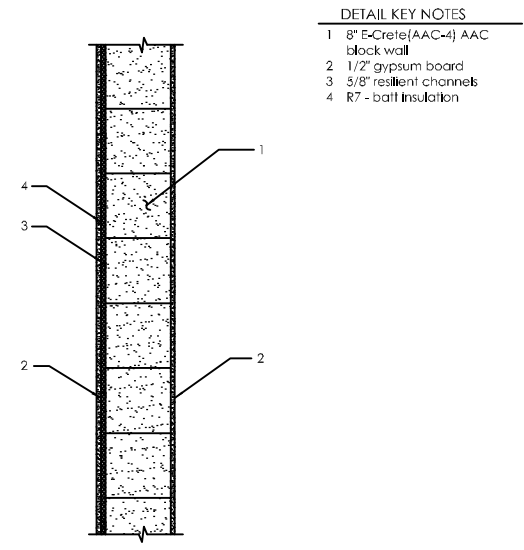
Table of Contents

AAC Sound Wall Details

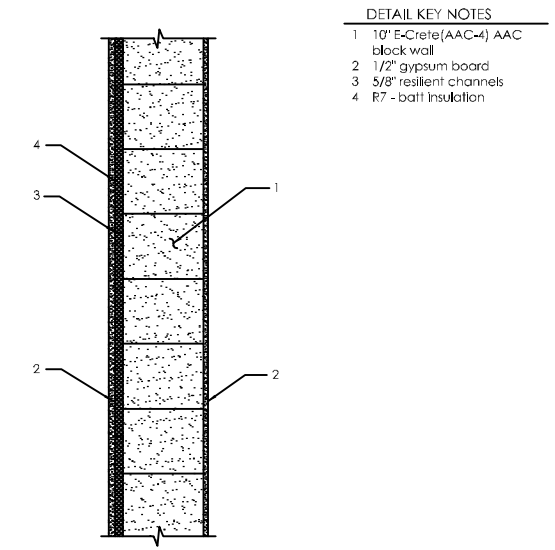
Sound Wall Details		
Section #	Section Description	Detail No.
19000	Sound Walls	19001-19009



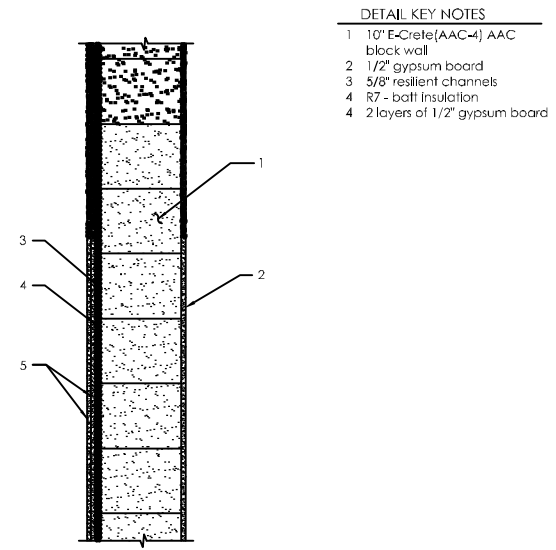
- DETAIL KEY NOTES
- 1 6" E-Crete(AAC-4) AAC block wall
 - 2 1/2" gypsum board
 - 3 5/8" resilient channels
 - 4 R7 - batt insulation



- DETAIL KEY NOTES
- 1 8" E-Crete(AAC-4) AAC block wall
 - 2 1/2" gypsum board
 - 3 5/8" resilient channels
 - 4 R7 - batt insulation



- DETAIL KEY NOTES
- 1 10" E-Crete(AAC-4) AAC block wall
 - 2 1/2" gypsum board
 - 3 5/8" resilient channels
 - 4 R7 - batt insulation



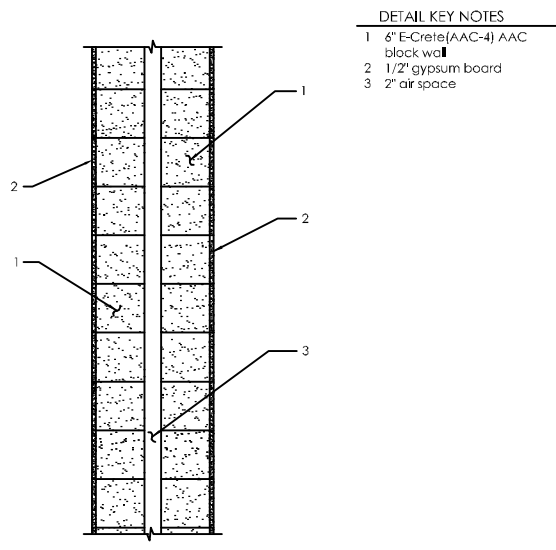
- DETAIL KEY NOTES
- 1 10" E-Crete(AAC-4) AAC block wall
 - 2 1/2" gypsum board
 - 3 5/8" resilient channels
 - 4 R7 - batt insulation
 - 5 2 layers of 1/2" gypsum board

6" E-CRETE AAC SOUND WALL - STC = 50
19001

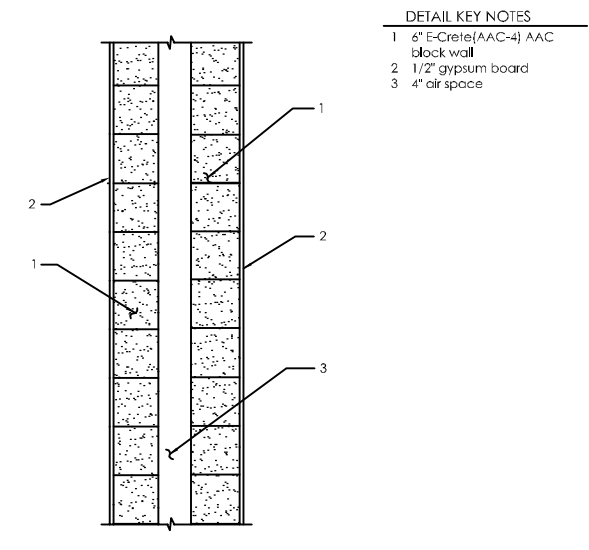
8" E-CRETE AAC SOUND WALL - STC = 51
19002

10" E-CRETE AAC SOUND WALL - STC = 52
19003

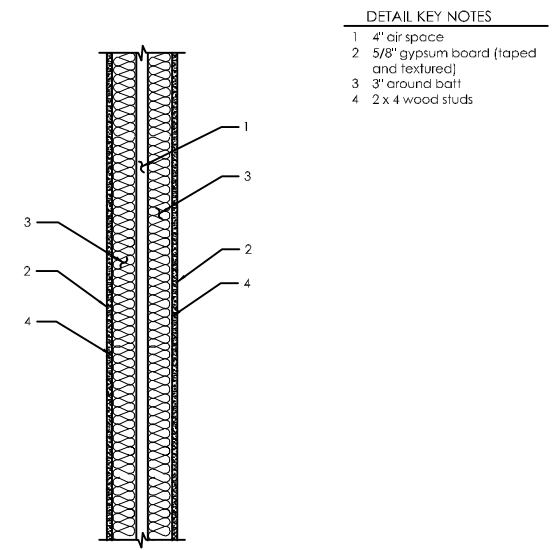
10" E-CRETE AAC SOUND WALL - STC = 55
19004



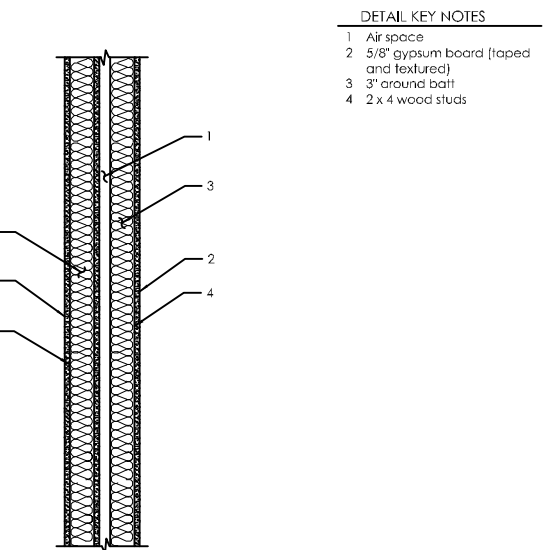
- DETAIL KEY NOTES
- 1 6" E-Crete(AAC-4) AAC block wall
 - 2 1/2" gypsum board
 - 3 2" air space



- DETAIL KEY NOTES
- 1 6" E-Crete(AAC-4) AAC block wall
 - 2 1/2" gypsum board
 - 3 4" air space



- DETAIL KEY NOTES
- 1 4" air space
 - 2 5/8" gypsum board (taped and textured)
 - 3 3" around batt
 - 4 2 x 4 wood studs



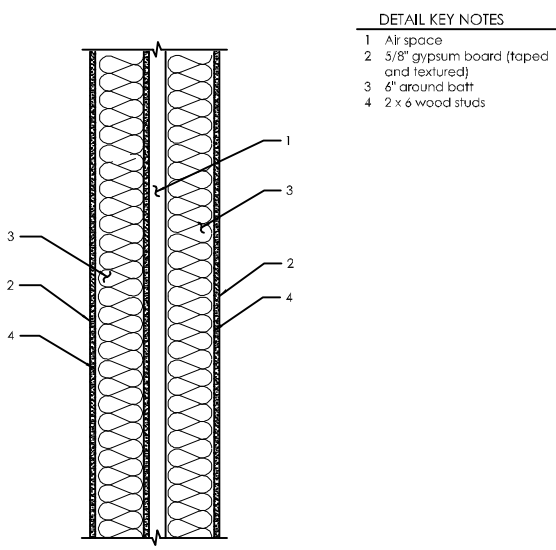
- DETAIL KEY NOTES
- 1 Air space
 - 2 5/8" gypsum board (taped and textured)
 - 3 3" around batt
 - 4 2 x 4 wood studs

DOUBLE 6" E-CRETE AAC SOUND WALL WITH 2" AIR SPACE - STC = 57
19005

DOUBLE 6" E-CRETE AAC SOUND WALL WITH 4" AIR SPACE - STC = 61
19006

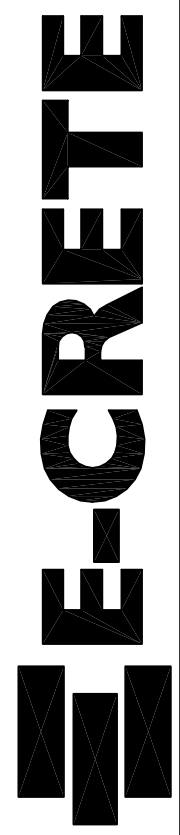
DOUBLE 2 X 4 WOOD STUD SOUND WALL - STC = 50
19007

DOUBLE 2 X 4 WOOD STUD SOUND WALL - STC = 55
19008



- DETAIL KEY NOTES
- 1 Air space
 - 2 5/8" gypsum board (taped and textured)
 - 3 6" around batt
 - 4 2 x 6 wood studs

DOUBLE 2 X 6 WOOD STUD SOUND WALL - STC = 60
19009



19001-19009