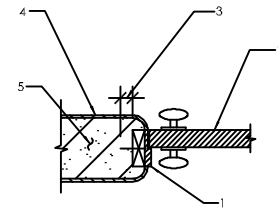


Table of Contents

AAC Architectural Details

Architectural Details		
Section #	Section Description	Detail No.
19100	Door and window Jambs	19101-19107

- DETAIL KEY NOTES**
- 1 Door frame
 - 2 Door
 - 3 See schedule
 - 4 AAC wall finish
 - 5 AAC block wall



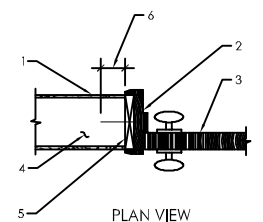
PLAN VIEW

Note:
See structural drawings for AAC
Intel information

RECOMENDED WOOD ANCHORS				
MANUFACTURER	MODEL	ITEM NO.	MIN. EMBEDMENT IN TO AAC	CONTACT INFORMATION
HELI	HRD-UGT	00203331	3-1/4"	1-800-879-8000 / WWW.USHELI.COM
TOX	VLF FRAME ANCHORS	VLF10120	3-1/4"	1-800-325-7540 / WWW.DEMANDPRODUCTS.COM
HELIKX	TURBO TES		3"	1-888-992-9989 / WWW.HELIKX.COM

WOOD DOOR FRAM ANCHORAGE TO AAC BLOCK WALL 19101

- DETAIL KEY NOTES**
- 1 Wall finishes
 - 2 Wood door jamb
 - 3 Wood door
 - 4 AAC block wall
 - 5 2 x wood bucking screwed into AAC block wall
 - 6 See schedule



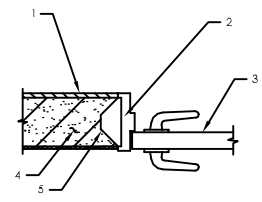
PLAN VIEW

Note:
See structural drawings for AAC Intel
information

RECOMENDED WOOD ANCHORS				
MANUFACTURER	MODEL	ITEM NO.	MIN. EMBEDMENT IN TO AAC	CONTACT INFORMATION
HELI	HRD-UGT	00203331	3-1/4"	1-800-879-8000 / WWW.USHELI.COM
TOX	VLF FRAME ANCHORS	VLF10120	3-1/4"	1-800-325-7540 / WWW.DEMANDPRODUCTS.COM
HELIKX	TURBO TES		3"	1-888-992-9989 / WWW.HELIKX.COM

WOOD DOOR FRAME ANCHORAGE TO AAC BLOCK 19102

- DETAIL KEY NOTES**
- 1 Plaster
 - 2 Mortar fill
 - 3 Steel door
 - 4 AAC Block wall
 - 5 Frame ties

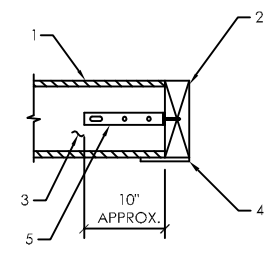


PLAN VIEW

Note:
1. Use frame wire ties laid in mortar bed to anchor steel door frame to aac block wall as shown in the illustration. any gaps between frame and AAC block should be filled with mortar to eliminate cavities.
2. See structural drawings for AAC Intel information.

STEEL DOOR FRAME ANCHORAGE TO AAC BLOCK 19103

- DETAIL KEY NOTES**
- 1 Plaster
 - 2 Wood jamb
 - 3 AAC Block wall
 - 4 Trim moulding
 - 5 18 gage galvanized strap at 24" o.c.

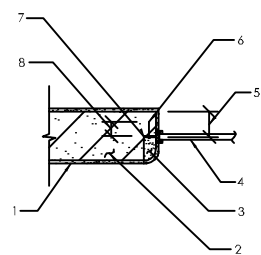


PLAN VIEW

Note:
See structural drawings for AAC Intel
information

DOOR FRAME OPENING ANCHORAGE TO AAC BLOCK 19104

- DETAIL KEY NOTES**
- 1 AAC wall finish
 - 2 AAC wall
 - 3 AAC Intel
 - 4 Window
 - 4" min
 - 6 #12 galvanized course threaded screws at 24" o.c. max (3 minimum per side)
 - 7 Windows sealer
 - 3" min

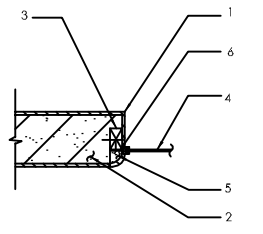


PLAN VIEW

Note:
See structural drawings for AAC Intel
information

WINDOW AT AAC WALL 19105

- DETAIL KEY NOTES**
- 1 AAC wall finish
 - 2 AAC block wall
 - 3 2 x wood bucking glued and screwed with 3 #12 galvanized 4 1/2" long wood screws at 24" o.c. max (3 - minimum per side)
 - 4 Window
 - 5 AAC Intel
 - 6 Window sealer

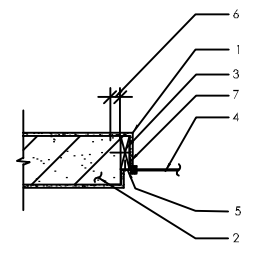


PLAN VIEW

Note:
See structural drawings for AAC Intel
information

WINDOW AT AAC WALL 19106

- DETAIL KEY NOTES**
- 1 AAC wall finish
 - 2 AAC block wall
 - 3 2 x wood bucking glued and screwed with #12 galvanized course threaded screws at 24" o.c. max (3 - minimum per side)
 - 4 Window
 - 5 Window sealer
 - 6 3" minimum
 - 7 Metal flashing



PLAN VIEW

Note:
See structural drawings for AAC Intel
information

WINDOW AT AAC WALL 19107